



Adding Quality to Life

April 17, 2018

SUBJECT: FRENCH RIDGE PARK, ST. MARY'S PARK, IVANHOE/PHEASANT HILLS  
DRAINAGE IMPROVEMENTS  
CITY PROJECT NO. 18015

Dear Resident,

The Ivanhoe/Pheasant Hills neighborhood has experienced elevated water levels within wetlands and/or poor drainage creating drainage concerns. Wetlands, creeks, and channels in your area serve as the drainage system for surface water and may be in need of maintenance.

The City of Plymouth is working to design and implement drainage improvements in your neighborhood to improve the flood protection function of the local drainage system. The City has contracted with Hansen, Thorp, Pellinen & Olson (HTPO), Inc. for design of the drainage improvements. The first step in this project is to survey the area of concern (see attached for area). You may see staff from HTPO, Inc. in the coming weeks on-site to perform this survey. At no time will staff from HTPO, Inc. need to enter your home nor do you need to be present for the survey.

A project website has been established to disseminate project information during the plan development, possible construction, and subsequent restoration phases:

<http://www.plymouthmn.gov/departments/public-works/project-spotlight/water-resources-projects/neighborhood-drainage-improvements-city-project-no-18015>

If you have any questions please feel free to contact me directly at 763-509-5526 or via email at [dasche@plymouthmn.gov](mailto:dasche@plymouthmn.gov).

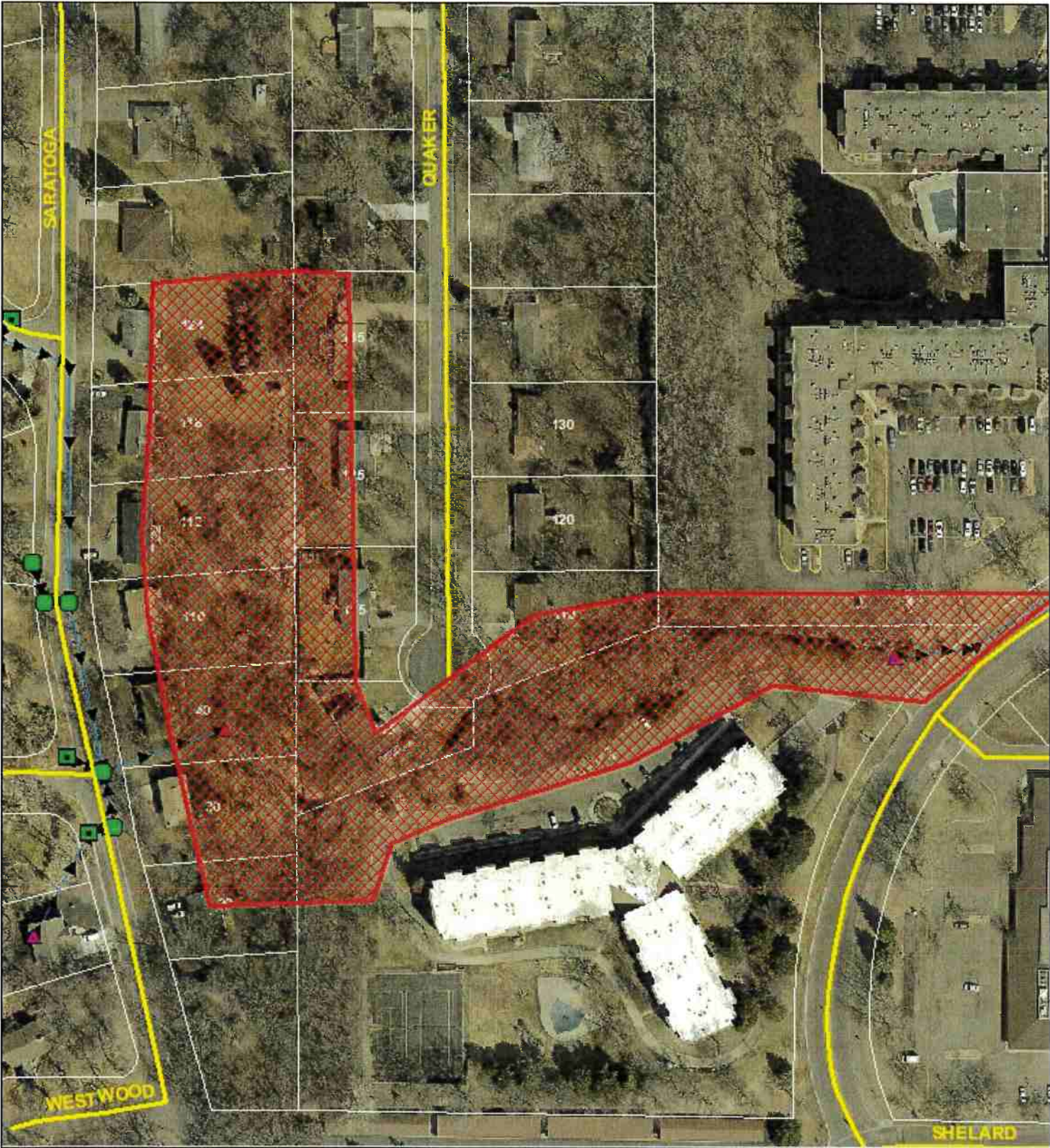
Sincerely,

Derek Asche  
Water Resources Manager





Ivanhoe/Pheasant Hills  
Drainage Improvement - Survey Area  
City Project No. 18015



	Outlet	<b>Legend</b>	Outfall
	Catch Basin		Storm Sewer Pipe
	Catch Basin / Manhole	Survey Area	Property Boundaries